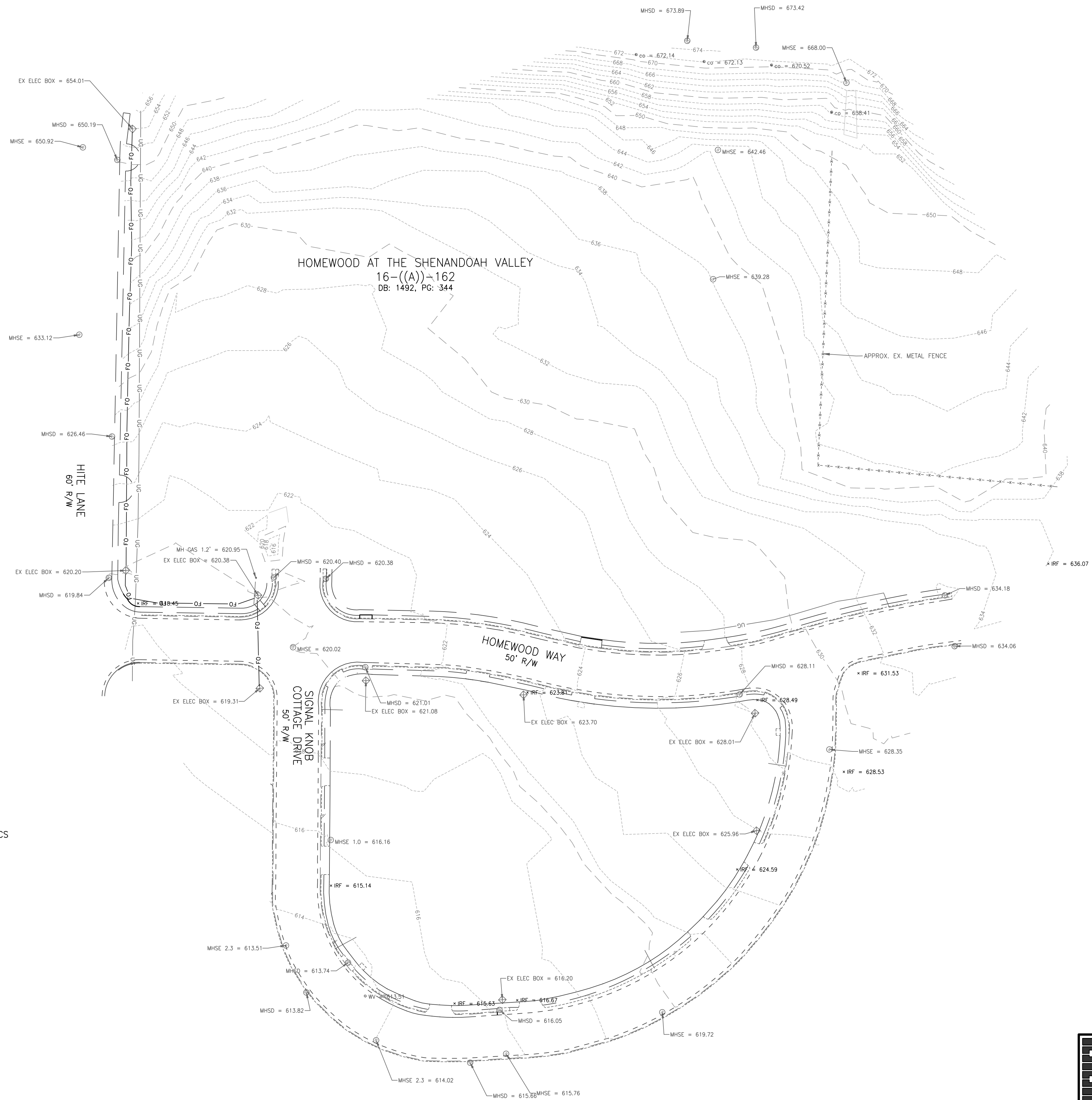
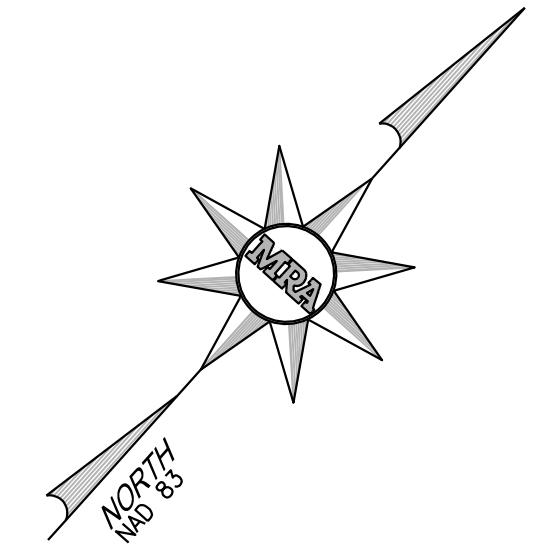
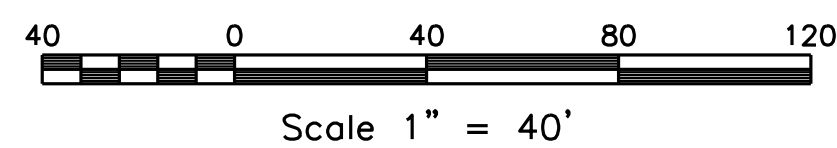


- NOTE:
1. TOPOGRAPHIC FIELD SURVEY CONDUCTED 1-2-19 BY THIS FIRM.
 2. VERTICAL DATUM: NVAD 88



LEGEND

- EX. 10' CONTOUR
- EX. 2' CONTOUR
- EX. PAVEMENT
- === EX. CURB
- EX. WALKWAY
- UG UG UG EX. UNDERGROUND GAS LINE
- FO FO FO EX. UNDERGROUND FIBEROPTICS
- SAN SAN SAN EX. SANITARY LINE
- OH OH OH EX. OVERHEAD LINE
- UG UG UG EX. UNDERGROUND CONDUIT
- x x x EX. FENCE LINE
- EX. RETAINING WALL
- p EX. SIGN
- * EX. LIGHT POLE
- o EX. UTILITY POLE



MRA
MORRIS & RITCHIE ASSOCIATES, INC.
 ENGINEERS, PLANNERS, SURVEYORS AND LANDSCAPE ARCHITECTS
 604 SOUTH KING STREET, SUITE 200
 LEESBURG, VA 20166
 (703) 994-4047
 MRAGTA.COM
 COPYRIGHT 2019 MORRIS & RITCHIE ASSOCIATES, INC.

VILLAGE AT CEDAR CREEK - EXHIBIT
 STRASBURG, VIRGINIA
 SHENANDOAH COUNTY
 SCALE: 1"=40'
 DATE: 1-4-19